



Argentina & Antarctica: The Ultimate Snow Hill Expedition

Tour Code Arge6

☎ 01962 302 086

sales@wildlifeworldwide.com

www.wildlifeworldwide.com



WILDLIFE
WORLDWIDE

TRAVEL | EXPERIENCE | CONSERVE

At Wildlife Worldwide we have been creating **outstanding wildlife holidays** for over 30 years. Established in 1992, our first tours were in Africa, due to founder Chris Breen's love of Zambia's Luangwa Valley where he managed bush camps and guided safaris. Our collection has grown over the years and now covers all corners of the globe from Africa, Asia and the Americas, to Europe and the Polar regions. From safaris and whale-watching to bear watching and wildlife cruising, we have something for all wildlife enthusiasts. Here are a few great reasons to choose Wildlife Worldwide...

A knowledgeable and passionate team of wildlife experts

We have travelled the world, managed safari lodges, worked as tour leaders and safari guides, and have years of experience in the travel industry. We continually research, explore and photograph wildlife and wilderness areas around the world to keep our knowledge up to date and consistently arrange outstanding trips.

Our personal service

Our **personal service**, built on the foundations of quality, knowledge, expertise, reliability and professionalism. A dedicated Wildlife Travel Consultant is available to discuss your holiday at any point.

Flexible tailor-made holidays

We offer **flexibility**, so whether you wish to upgrade your flights, change your accommodation, add in some extra days, or plan something special to coincide with an anniversary or birthday, please tell us, so we can perfect your holiday.

Dedicated group departures

We have our own series of dedicated group departures and in addition we sell a hand-picked collection of departures offered by our overseas partners.

Expert local naturalist guides

Our **naturalist guides** and **tour leaders** are truly outstanding. We only work with the finest guides who offer an exceptional level of expertise, knowledge and passion, and always go the extra mile.

Committed to conservation and responsible tourism

Since its inception, Wildlife Worldwide has placed a special emphasis on **sustainable travel** – focussing on the environment, the wildlife, and the communities that live in close proximity.

We are independent

We are a privately-owned independent company – something that is increasingly rare these days! The advice we give you is completely impartial.

Peace of mind

In addition to offering you 100% financial protection through our **Air Tour Organisers License** (ATOL 10544) and our membership of the **Association of Bonded Travel Organisers Trust Limited** (5199) we have a 24-hour emergency line should anything happen whilst you are away.

We look forward to welcoming you on your next Wildlife Worldwide holiday.

INTRODUCTION

Join us on this exclusive charter aboard the MV Ortelius, an ice-strengthened vessel perfectly equipped to explore the frozen wilderness of the Weddell Sea. This once-in-a-lifetime journey offers an intimate and unparalleled opportunity to discover the remote eastern side of the Antarctic Peninsula, a region of breathtaking ice shelves, majestic icebergs, and extraordinary wildlife.

The highlight of this thrilling expedition is a rare chance to visit a remote emperor penguin colony south of Snow Hill Island, accessible only by helicopter. Walking across the sea ice to observe these remarkable creatures in their natural habitat is a privilege few experience.

Our adventure begins in Ushuaia where we board the Ortelius and cross the legendary Drake Passage. Upon reaching the Antarctic Peninsula we navigate the iceberg-laden waters of the Antarctic Sound and Weddell Sea, where towering icebergs and vast chunks of sea ice create a surreal and unforgettable landscape.

Antarctica's wildlife is as diverse as it is mesmerising. In addition to emperor penguin, the Weddell Sea is home to Adélie penguin, known for its bold and curious nature, gentoos, the fastest swimmers among the penguin species; and chinstrap, easily identified by their distinctive black 'chinstrap'.

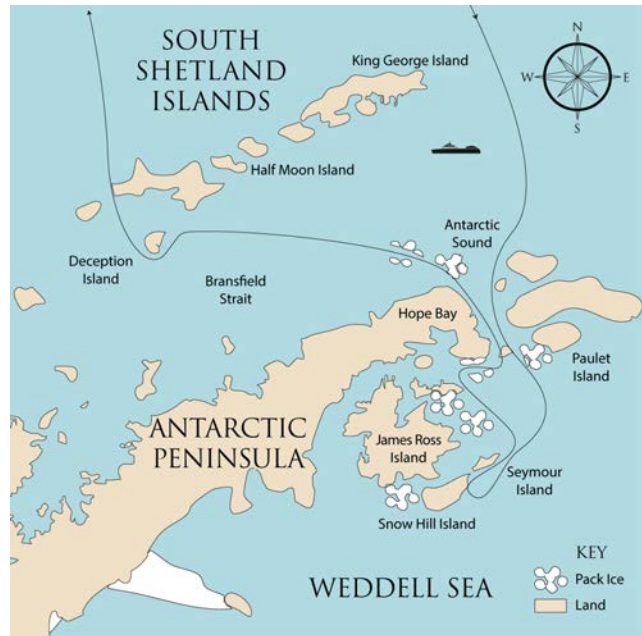
We also have the chance to encounter playful crabeater seals, the grace of humpback whales, and the formidable presence of Antarctica's apex predator - the leopard seal. Seabirds, such as Wilson's storm-petrel, Antarctic petrel, Arctic tern, and the majestic black-browed albatross, soar above the icy waters. Each day offers us new opportunities to witness fascinating wildlife behaviour - from porpoising penguins to orcas navigating the ultramarine ice floes.

If conditions allow, we'll take an unforgettable helicopter journey to the emperor penguin rookery - one of the most remote and extraordinary wildlife habitats on Earth. Here, amid the vast expanse of sea ice, we'll stand metres from these majestic creatures. Emperor penguins are uniquely adapted to this extreme environment, with streamlined bodies for efficient swimming, dense feathers for insulation, and the remarkable ability to huddle together to conserve heat, enabling them to raise their chicks in the harsh Antarctic winter. Observing their resilience and behaviour in this pristine setting is a truly unforgettable experience.

Throughout the voyage a leading team of naturalists, photographers, and expert guides will enrich your journey. Through engaging lectures, workshops, and demonstrations, they will provide a fascinating insight into the region's ecology, wildlife, and history.

In their company you'll gain a deep understanding of the importance of this unique region and the incredible adaptations of its wildlife. Whether observing a Weddell seal basking on the ice, spotting a fin whale surfacing in the distance, or capturing the perfect photograph of a penguin colony, every moment promises to be extraordinary.

This exclusive charter offers more than your traditional polar expedition - this is an incredible journey to one of the most pristine and captivating ecosystems on Earth. It really is The Ultimate Snow Hill Expedition.



Planned Departure Dates

DATE	
21/11/2027	Please enquire

OUTLINE ITINERARY

21 Nov 2027	Depart UK arriving the next day.
22 Nov 2027	Buenos Aires (1 night).
23 Nov 2027	Ushuaia (1 night).
24 Nov 2027	Embark in Ushuaia & set sail (1 night).
25 Nov 2027	Drake Passage (2 nights).
27 Nov 2027	Weddell Sea (4 nights).
01 Dec 2027	Deception Island (1 night).
02 Dec 2027	Drake Passage (2 nights).
04 Dec 2027	Disembark in Ushuaia and fly to Buenos Aires (1 night).
05 Dec 2027	Fly back to UK arriving the next day.

HIGHLIGHTS

- 🐾 A once-in-a-lifetime adventure, this exclusive charter offers a rare opportunity to experience the awe-inspiring landscapes and extraordinary wildlife of the remote eastern Antarctic Peninsula
- 🐾 If conditions allow, we'll enjoy an unforgettable helicopter flight to the remote emperor penguin colony to observe these magnificent birds in their natural habitat
- 🐾 The opportunity to encounter Adélie, gentoo, and chinstrap penguin, as well as crabeater and leopard seal
- 🐾 A chance to observe humpback, minke, and orca whales, while seabirds such as Antarctic petrel, Arctic tern, and albatross soar above
- 🐾 Experience a journey to one of the most remote places on Earth, home to breathtaking ice shelves, towering icebergs, and extraordinary wildlife
- 🐾 Travel in comfort and safety aboard MV Ortelius, an ice-strengthened vessel designed for polar exploration, offering the perfect base for navigating Antarctica's frozen wilderness
- 🐾 Gain an in-depth knowledge of the region from our expert team, enhancing your experience through guided excursions, lectures, and workshops

TOUR LEADERS

Chris Breen

Chris studied Geographical Sciences in Plymouth, however his first encounter with the wider world was in 1983, when he headed off to Zambia. Under the tutelage of the late Norman Carr, the pioneer of walking safaris, he worked as a wildlife guide and managed two wilderness camps. On his return to the UK, he had a spell at a major travel agency in London before setting up Wildlife Worldwide in 1992. Since then, he has travelled the world in search of first-class wildlife experiences.

He devised the Festival of Wildlife concept, which has spawned the Festival of Bears and the Festival of Whales. An ardent conservationist, Chris has co-led each of these since their inception.



Dan Free

General Manager of Wildlife Worldwide Dan graduated with an MSc in Zoology, before spending six weeks exploring India's tiger reserves. Venturing on to Central and South America and finally Africa, he worked on conservation projects and gained a wealth of wildlife knowledge, before returning to the UK where he worked in ecological consultancy, conducting protected species surveys and specialising in ornithology and herpetology.

Dan has led, pioneered and researched trips to a huge range of destinations in pursuit of some of the world's most sought after species. His enthusiasm for nature and conservation is contagious and his fascination of the natural world extends through all taxa. There is very little about the natural world which evades Dan's interest!



Helen Bryon

A member of the Wildlife Worldwide team, Helen is a qualified South African safari guide who absolutely loves big cats and wild dogs. Following a trip to Baja California, she discovered a passion for cetaceans which led her to extend her marine mammal knowledge accordingly. She is as happy watching impalas as she is leaf cutter ants, as long as she is in the great outdoors. She is always keen to expand her ornithological skills throughout the different destinations she leads to including South America and Europe. With her boundless energy, enthusiasm and eye for perfection, Helen will ensure you get the most from your time on her trips whilst sharing her passion for wildlife.



Mark Carwardine

Mark Carwardine is a zoologist, an outspoken conservationist, an awardwinning and bestselling author, a TV and radio presenter, a widely published photographer, a wildlife tour operator and leader, a lecturer, and a BBC Wildlife magazine columnist.

He co-presented the BBC-TV series Last Chance to See, with the comedian and actor Stephen Fry, and the BBC-TV series Museum of Life. He also presented the weekly half-hour radio programme Nature on BBC Radio 4 for many years.

He has written more than 60 books, including Field Guide to Whales, Dolphins and Porpoises, The Shark Watcher's Handbook and The Guinness Book of Animal Records. His latest is How to Photograph Garden Birds.

He was Chairman of the Judging Panel of the prestigious Wildlife Photographer of the Year competition for seven years (2005-2011) and was selected as one of the world's 40 most influential nature photographers in Outdoor Photography magazine.



Sean Weekly

A multi award-winner and full-time photographer, Sean's work is regularly featured across a range of publications, including national and international press. After a career as a Royal Marine, Sean moved to the diverse habitats of Singapore where long-tailed macaques, snakes, lizards and tropical birds were just a stone's throw away from his home.

Travelling through South East Asia and Australia with his camera was what ignited his love of the natural world and photography, and now he ventures across the globe to expand his wildlife photography. Sean has visited and led numerous workshops in the UK and in Europe at locations including Skomer, Greece, Finland, Spain and the Scottish Highlands. Outside of Europe Sean leads photography tours to Japan, South Africa and North America.



Nick Mackman

Nick is an outstanding ceramic sculptor, widely exhibited and winner of the 2015 David Shepherd Wildlife Foundation (DSWF) Wildlife Artist of the Year competition. Most of her sculptures are Raku fired, giving a rich but natural looking crackle glaze. She aims to get under the skin of the animal giving each sculpture its own unique personality. The majority of Nick's pieces are based on field observations, with Zambia's South Luangwa and Tanzania's Ndutu being two of her favourite locations.

Her work is held in numerous private collections and it is prized for its striking intensity and personality. She has been commissioned by British Airways and the BBC Wildlife Photographer of the Year competition.



DETAILED ITINERARY

21 Nov 2027

Depart from London Heathrow to Buenos Aires Ezeiza International Airport.

22 Nov 2027

Welcome to Buenos Aires!

We arrive in the lively city of Buenos Aires and transfer to our hotel. The remainder of the day is yours to relax or explore at your own pace.

Buenos Aires

Buenos Aires is the vibrant, dynamic capital of Argentina, renowned as a city of flair, high drama and culture, with a distinctly European flavour. This is embodied in its most famous export: the music and dance of tango. With its traditional cafés and fabulous steak restaurants, bustling grand avenues and cobbled streets lined with magnificent faded mansions, this is a city worth exploring.

Though the biggest passions here are football, tango and food, this is a city of theatre, opera, history, culture and art. Summers in Buenos Aires are hot and steamy, while winter nights can be icy. The city is a major port, and there are regular ferry services across the estuary of the Rio de la Plata to neighbouring Uruguay.



Overnight at Intercontinental Hotel, Buenos Aires

Located close to many of the city's top cultural attractions, museums, theatres, coffee shops and famous neighbourhoods such as San Telmo and Florida Avenue, this luxury hotel is the perfect combination of convenience and comfort in Argentina's capital. After a day exploring Buenos Aires, relax in the on-site spa, work up a sweat in the gym or cool off in the indoor pool before dining in one of the two on-site restaurants. Each of the elegantly appointed en suite rooms and suites enjoys city views, air-conditioning, flat-screen TV and complimentary WiFi.



23 Nov 2027

Today we travel to Ushuaia

After breakfast, we transfer to the airport for our flight to Ushuaia.

Fly from Buenos Aires Jorge Newbery International Airport to Ushuaia Malvinas Argentinas International Airport .

Ushuaia

Perched at the southernmost edge of Argentina's Tierra del Fuego province, Ushuaia proudly claims its title as the world's southernmost city. Its geographical isolation, over 3,000 kilometres south of Buenos Aires, makes it one of the main gateways to Antarctica.

At the heart of Ushuaia lies the Beagle Channel, a majestic waterway slicing through the Patagonian wilderness and flanked by the formidable Martial Mountains. The city has an interesting history, with century-old buildings representing Ushuaia's pioneering past. Visitors can learn more about the pioneers and penal colony at the Prison Museum. Beyond the city, the Andes Mountains are home to the elusive puma and iconic Andean condor, while along the rugged coastline, colonies of sea lions and pods of orcas can be seen.



Overnight at Hotel Albatros

The Hotel Albatros is located in the centre of Ushuaia, overlooking the Beagle Channel and just a minutes walk away from the town's port. The hotel is also a short 3-kilometre drive from the airport. All the rooms are en suite and have the furnishings needed for a comfortable stay. In addition, there is also a sauna, restaurant and bar for the guests, and complimentary WiFi.



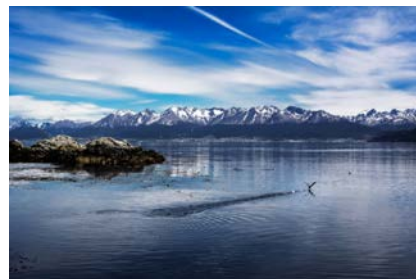
Breakfast is included.

24 Nov 2027

Embark in Ushuaia & set sail

This morning, enjoy breakfast and some free time to explore the charming streets of Ushuaia, lined with cosy cafés, lively restaurants, and museums that share tales of explorers and daring pioneers.

Our polar adventure begins this afternoon. We board Ortelius and set sail through the spectacular Beagle Channel, flanked by rugged mountains and wild Patagonian landscapes. As we journey south there is time to settle into our cabins, explore the ship, and meet the expedition team. This evening we enjoy a welcome dinner and gather together to anticipate the incredible journey ahead.



As we navigate the Beagle Channel, we are likely to encounter an abundance of birdlife. Black-browed albatross, southern giant petrel, and white-chinned petrel glide effortlessly over the waves, while South American terns and kelp gulls may also follow in our wake. Along the coastline imperial and rock shags often perch on rocky outcrops, and flightless steamer ducks may be seen paddling in the shallows.

In the water we may encounter curious South American sea lions bobbing on the surface or perhaps lounging on the shoreline. With luck, Peale's and dusky dolphins may appear alongside the ship, riding the bow waves as we make our way towards the open sea.



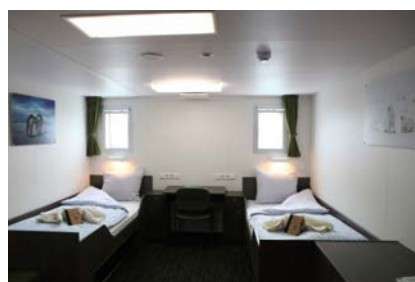
Begin your stay aboard the Ortelius (10 nights)

Ortelius is a comfortable and highly capable expedition vessel, purpose-built for navigating the most extreme polar environments. With the highest ice-class notation (UL1, equivalent to 1A), she is designed to push through solid 1-year sea ice and navigate loose multi-year pack ice, allowing her to visit some of the most remote and wildlife-rich regions of the Arctic and Antarctic.

Originally constructed in Poland in 1989 as *Marina Svetaeva*, she was later renamed in honour of the Dutch cartographer Abraham Ortelius, who published the first modern world atlas in 1570. Today, Ortelius combines the rugged strength of an icebreaker with the comfort and flexibility essential for immersive expedition cruising.

Ortelius accommodates just 108 guests in 50 well-appointed cabins, ensuring an intimate expedition. A spacious deck provides outstanding wildlife-viewing opportunities, while the large, open bridge welcomes guests to observe navigation up close. A fleet of Zodiacs allows for swift and frequent landings, maximising time spent exploring.

Inside, Ortelius offers a relaxed and welcoming atmosphere, with a comfortable observation lounge, lecture room, and dining area designed for guests to gather and share their experiences. Although she is built for true adventure, she does not compromise on comfort, making her the ideal choice for those seeking a seamless blend of exploration and relaxation.



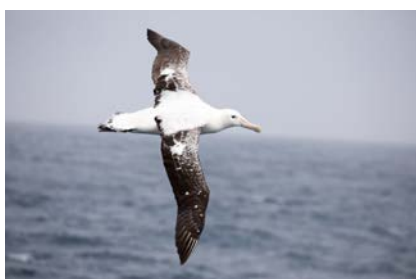
Breakfast and dinner are included.

25 & 26 Nov 2027

Drake Passage

The legendary Drake Passage connects the rugged terrain of southern South America and the majestic Antarctic Peninsula. Despite its formidable reputation, this expanse of water beckons intrepid travellers with the promise of the untouched beauty of Antarctica's pristine wilderness. Named after the renowned English seafarer Sir Francis Drake, who sailed these waters during the late 16th century, this passage is steeped in maritime history and adventure.

Today, the Drake Passage unveils an awe-inspiring panorama, where a mesmerising spectacle of life flourishes. Witness the graceful flight of royal and wandering albatross, Cape and Wilson's storm petrel, and the audacious swoops of south polar skuas amidst swirling currents and windswept skies. Beneath the surface, a variety of cetaceans can be found. Encounter these gentle giants, from majestic humpback whales to striking orca, and revel in the company of playful pods of dolphins frolicking in the waves.



At sea, sailing southbound towards Antarctica

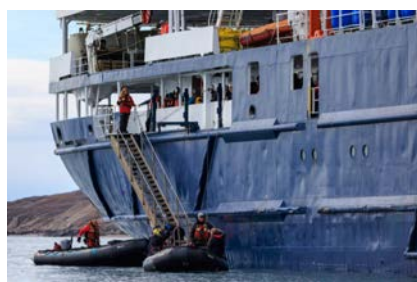
As we sail across the legendary Drake Passage, following in the wake of the great polar explorers, we take in the fresh ocean air, the rolling swells, and perhaps even a glimpse of whales breaking the surface. This stretch of ocean is alive with seabirds and we'll be hoping to see wandering, grey-headed, black-browed, and light-mantled sooty albatross as they rise and fall echoing the waves. Cape petrel, southern fulmar, Wilson's storm petrel, blue petrel, and Antarctic petrel are also likely companions on our journey.



Crossing the Antarctic Convergence marks our entry into the Southern Ocean, where the meeting of cold Antarctic waters with the milder sub-Antarctic seas creates a nutrient-rich environment teeming with marine life. As the scenery begins to change, so too does the wildlife, signalling that Antarctica is near.



During our time at sea, our superb expedition team will prepare you for your first landing with essential wildlife guidelines, Zodiac cruising instructions, and biosecurity protocols. A variety of lectures and workshops will offer fascinating insights into Antarctica's history, unique ecosystems, and extraordinary wildlife, enriching your experience before we even set foot on the frozen white continent.



Breakfast, lunch and dinner are included.

27 to 29 Nov 2027

Weddell Sea

The remote eastern side of the Antarctic Peninsula is one of the white continent's hidden gems. Named after British sailor James Weddell who ventured to latitude 74° South in 1823 while on a seal-hunting expedition, this deeply incised, 2,000 kilometre-wide bay is renowned for its vast ice shelves and flat-topped icebergs. The Weddell Sea hosts an upwelling of frigid water from the ocean depths, sustaining a rich ecosystem that supports resilient creatures braving the intense cold.

Emperor penguins, the most iconic inhabitants of the Weddell Sea, rely on its stable sea ice for breeding,

forming vast colonies that can number in the thousands. Adélie penguins, with their bold and curious nature, are also found along the icy shores. The nutrient-rich waters draw an abundance of marine mammals, including humpback whales, which can often be seen lunging through the surface as they gorge on krill. Minke whales and even the elusive orca also patrol these waters, hunting amid the ice floes.

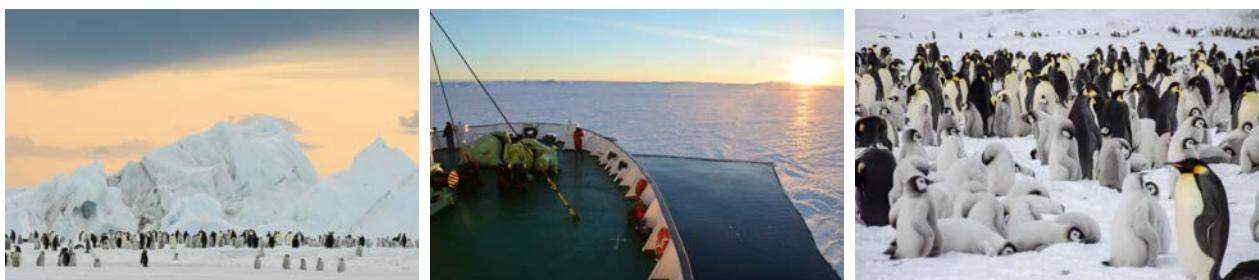
Seals are a constant presence in the Weddell Sea, from the sleek and powerful leopard seal - Antarctica's apex predator - to the deep-diving crabeater seal, which despite its name, primarily feeds on krill. Weddell seals, after which the sea is named, are frequently spotted resting on the ice, their large, round eyes adapted to the dim light under the frozen surface. Southern elephant seals, the world's largest seals, haul out along the coastline, their deep calls echoing across the ice.

Above the frozen landscape a variety of seabirds can be seen, including Antarctic petrel, snow petrel, and the imposing south polar skua, a formidable hunter and scavenger. Giant petrel patrol the open water, while Cape petrel, with their striking black-and-white plumage, flit gracefully above the waves. Combined, these species form a remarkable web of life, adapted to one of the most extreme environments on Earth.



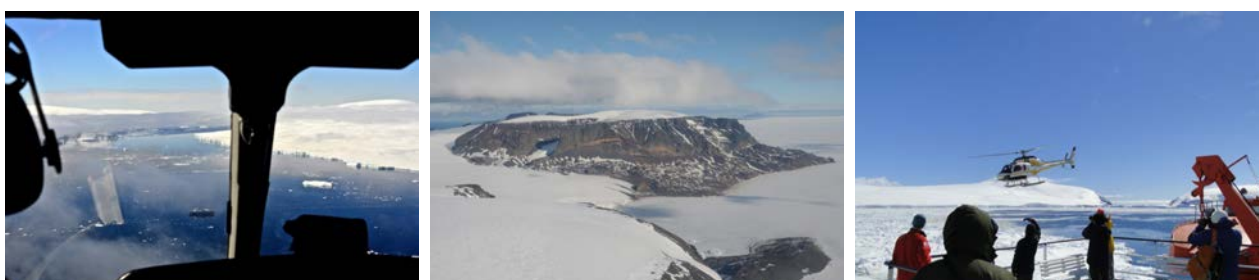
Arrive on the eastern side of the Antarctic Peninsula

As we sail through Antarctic Sound and approach the eastern side of the Antarctic Peninsula, huge tabular icebergs herald our arrival. During this part of our expedition, the quest is on for emperor penguins. Using both our ice-strengthened vessel and onboard helicopters, there's a good chance we'll find them.



In search of emperor penguins

The next four days are dedicated to the ultimate goal of our voyage - reaching the emperor penguin colony on Snow Hill Island. This is one of the most remote and elusive wildlife encounters on Earth, and while there are no guarantees, we will use every opportunity to make it possible.



Our vessel will navigate through the ice, with our Captain positioning her in the best possible location to launch our helicopters. If conditions allow, the helicopters will take small groups and fly towards the colony,

landing at a carefully chosen site to ensure minimal disturbance to the penguins. From there, we will set off on foot, trekking for approximately 45 minutes across the frozen landscape to reach the rookery.



If we are fortunate we will find ourselves surrounded by thousands of magnificent emperor penguins. The sight of these majestic penguins scattered across the ice is nothing short of breathtaking. Standing tall against the vast icy backdrop, these remarkable birds are the largest of all penguin species, reaching up to 1.2 metres in height and weighing around 23 kilograms. Their thick layer of sub-dermal fat and dense feathers provide critical insulation, enabling them to thrive in the world's harshest conditions. As we observe them waddling across the ice or huddling together to conserve warmth, we witness firsthand their resilience and adaptability.



Each year, these birds embark on an epic journey across the frozen landscape to reach their breeding grounds - an odyssey that is nothing short of remarkable. Unlike any other penguin species, the emperors breed during the Antarctic winter. The males take on the ultimate test of endurance, incubating the eggs on their feet for months, sheltered only by a fold of skin, while the females journey to the open ocean to hunt. This incredible feat of dedication and survival unfolds before us as we witness devoted parents tending to their young, passing food from beak to beak, and sheltering their chicks from the icy winds.



We take time to quietly observe their behaviour - from adults preening their immaculate black-and-white plumage, to fluffy chicks huddled together for warmth. With expert guides on hand, we gain deeper insight into their incredible lifecycle and the challenges they face in this extreme environment.



However we are at the mercy of Antarctica's extreme and changeable conditions. Ice, wind, and visibility will determine whether flights can operate, and flexibility is key. If the weather is on our side, we may even have the chance for a second visit.

Regardless of the outcome, these days will be filled with adventure - whether through breathtaking aerial views of the Weddell Sea, the challenge of exploring one of the planet's most isolated landscapes, or the sheer anticipation of searching for one of the world's most extraordinary birds.

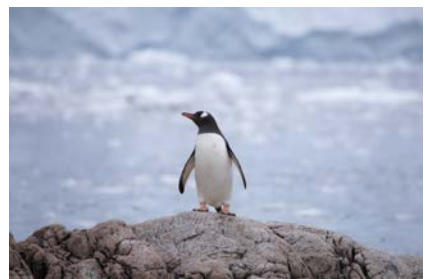


Breakfast, lunch and dinner are included.

30 Nov 2027

Explore the Weddell Sea (or an additional day in search of the emperor penguins)

If conditions were favourable on (voyage) days four to six, and we successfully visited the emperor penguin colony, today we explore some of the region's other spectacular landing sites, such as Devil Island, Brown Bluff or Gourdin Island. Each offers stunning landscapes and opportunities to encounter Antarctic wildlife.



Devil Island: Home to a bustling colony of Adélie penguin, this island offers incredible wildlife viewing. Watch as penguins gather along the shoreline, waddle between their rocky nests, and engage in lively displays of courtship and communication. For those interested in stretching their legs, the island's summit provides breathtaking views over the surrounding ice-covered seascape.



Brown Bluff: Arguably one of the most scenic sites in the region, Brown Bluff's sheer canyon walls and volcanic formations provide a dramatic backdrop to its thriving penguin colony. Here, Adélie and gentoo penguins go about their daily lives—building nests, feeding their chicks, and sometimes squabbling over prime spots. Snow petrels may be seen soaring overhead, while curious penguins often approach visitors at the shoreline.



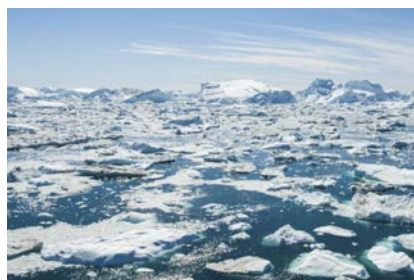
Gourdin Island: A true penguin paradise, this island is home to all three brush-tailed penguin species: Adélie, gentoo, and chinstrap. Watch as they shuffle across the snow, engage in energetic feeding chases, or gather in noisy groups near the water's edge. This site offers a fascinating glimpse into the social dynamics of different penguin species living side by side.



However, if weather or ice has prevented us from reaching the emperor penguin colony on previous days, we will make another attempt today. Using ship-to-shore helicopter flights, we will seize every opportunity to witness these magnificent birds in their remote and icy realm.

Scenic helicopter flights

In the unlikely event that we *are* able to fly but *cannot* reach Snow Hill Island, helicopter flights will still offer an incredible opportunity to witness some of the most awe-inspiring landscapes in Antarctica. Possible sites include:



The West Slopes of the Antarctic Sound: A rare aerial view of this remote area reveals a breathtaking panorama of layered sandstones, lava flows, glaciers, icebergs, and pack-ice stretching endlessly. The sight of solitary emperor penguins or Adélie penguins on ice floes, alongside soaring kelp gulls, skuas, and petrels, adds to the wonder. Towering mountain peaks pierce through the snow, while massive ice walls lie scattered across the slopes below.

Duse Bay: A thrilling helicopter journey may land you on a rocky hillock near an old refuge hut, where you'll be treated to stunning views of the bay. The landscape is dominated by snow and ice, with frost-shattered rocks adorned in colourful lichen. The dramatic contrast of icy terrain and vibrant lichen-covered rocks creates an image of striking natural beauty.

Seymour Island: Step into history on this island, where the Swedish Antarctic Expedition of 1901-4 braved harsh polar conditions. The island is a visual feast, with its striking sedimentary rock formations, fossilised

remains, and sweeping vistas offering a glimpse into both the ancient and modern world of Antarctica.



Breakfast, lunch and dinner are included.

01 Dec 2027

Deception Island

Deception Island, situated near the northern tip of the Antarctic Peninsula, is a captivating landmass in the South Shetland Islands archipelago. Its jagged coastline traces a deceptive crescent shape that encloses a flooded caldera, forming one of the world's safest natural harbours. A volcanic marvel, boasting a tumultuous history of eruptions and collapses, the island's unique horseshoe shape stems from the caldera's formation. Towering cliffs guard its inner harbour, where seawater meets geothermal heated springs to create a surreal landscape of steam and rock.

Despite this harsh environment, Deception Island hosts a surprisingly diverse array of wildlife. Colonies of chinstrap and gentoo penguins dot its rocky shores, while Antarctic fur seals bask in the fleeting warmth of the southern sun. The surrounding waters teem with krill, sustaining a plethora of marine life including humpback, orca and leopard seal. This is in addition to a variety of birds such as Wilson's storm petrel, black-bellied storm petrel, south polar skua and Antarctic tern.



Discover the delights of Deception Island

This morning, we sail to Deception Island, where we plan to land at Pendulum Cove or Whalers Bay. Deception Island is a sub-ducted crater which opens into the sea, creating a natural harbour for our vessel. Here, you can find hot springs, an abandoned whaling station, and an abundance of birdlife. Thousands of Cape petrels breed on the caldera shores and cliffs, as well as Dominican gulls, brown and south polar skua, Antarctic tern, Wilson's storm petrel, and black-bellied storm petrels.

Occasionally, penguins and seals venture into the caldera, to bathe in the geothermally warmed water.



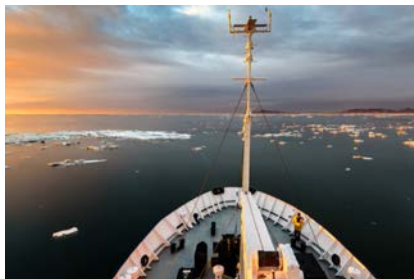
Breakfast, lunch and dinner are included.

02 & 03 Dec 2027

Sailing northbound to Ushuaia

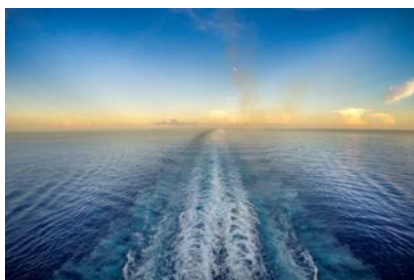
As we journey back across the fabled Drake Passage the ship will once again be accompanied by a dazzling array of seabirds, effortlessly riding the current in our wake. Keep an eye out for wandering albatross, with their impressive wingspans, as well as black-browed albatross, giant petrels, and Cape petrels soaring gracefully around the vessel.

Our return journey offers the perfect opportunity to reflect on our extraordinary adventure while enjoying the comforts of life on board. Our expedition team will continue to provide a fascinating programme of lectures and workshops, covering topics such as polar exploration, marine biology, and photography—helping you deepen your understanding of the remote wilderness we've just experienced.



Wildlife sightings are still very much part of the journey. From the observation areas or out on deck, scan the horizon for blows from fin or humpback whale. We may even spot pods of hourglass dolphins, their striking black-and-white markings flashing in the waves.

For those keen to make the most of their time at sea, the onboard library provides an excellent selection of books and our expedition team is always available for informal discussions. If time permits, we may also gather for recap sessions, sharing highlights, photos, and stories from our unforgettable time in Antarctica.



Breakfast, lunch and dinner are included.

04 Dec 2027

Disembark in Ushuaia

Today, our incredible expedition comes to an end. After breakfast, we bid farewell to our expedition team and fellow passengers before disembarking to continue our onward travel arrangements.



Fly from Ushuaia Malvinas Argentinas International Airport to Buenos Aires Jorge Newbery International Airport.

Upon arrival in Buenos Aires, we transfer to our hotel. The remainder of today is free for you to spend as you wish.

Stay at Intercontinental Hotel, Buenos Aires
Breakfast is included.

05 Dec 2027

Today we travel back to the UK

Enjoy a leisurely morning before transferring to the airport for our journey home.

Depart from Buenos Aires Ezeiza International Airport to London Heathrow.
Breakfast is included.

06 Dec 2027

Arrive back in the UK

ITINERARY NOTES

The above itinerary is for guidance only - programmes may vary depending on sea, ice and weather conditions, as well as wildlife opportunities. A degree of flexibility is needed to make the most of your polar adventure. Your Wildlife Worldwide tour leaders and on board expedition team will use their specialist knowledge and expertise to ensure they choose the best itinerary options for our polar quest.

The Voyage Price:

Please see the voyage price below, depending on your preferred cabin type. Pricing is 'per person' and based on twin/double occupancy.

Cabin Category	Flight Inclusive Package	Voyage Only	Flight Inclusive Package Single	Voyage Only Single
Twin cabin with 2 portholes (deck 3)	£16,195	£13,995	£25,995	£23,795
Twin cabin with 2 portholes (deck 4)	£16,695	£14,495	£26,845	£24,645
Twin cabin with 2 windows (deck 5)	£17,195	£14,995	£27,695	£25,495
Twin deluxe cabin with 3 windows (deck 5)	£18,195	£15,995	£29,395	£27,195
Double superior cabin with 2 windows (deck 5)	£19,195	£16,995	£31,095	£28,895

Payment schedule	Amount	Due date
Deposit	20%	on booking
First-stage payment	20%	22/06/26
Second-stage payment	20%	22/01/27
Final payment	Outstanding balance	29/08/27

Departure Date:

We plan to depart the UK on **21 November 2027** and embark our vessel in Ushuaia on **24 November 2027**, subject to final confirmation based on flight and vessel schedules.

Flight Inclusive Package:

This package includes international and domestic economy class flights, and accommodation in Buenos Aires and Ushuaia as specified in your itinerary.

Please note airlines typically release flight schedules approximately 11 months prior to departure. Once these schedules are announced (expected December 2026 / January 2027), we will then confirm our exact flight route.

We have allocated funds for the flights within your package cost. However, in the rare and unlikely event that flight prices significantly exceed our estimated amount, a small additional cost may need to be passed on to you. However this is highly uncommon, and we will always do our utmost to minimise any impact. We will keep you informed throughout the process and will communicate any adjustments should they arise.

Flight Upgrades:

Once flight schedules are released, we will be able to provide detailed pricing for flight upgrades. If you are interested in upgrading to premium economy, business or first class, please let us know, and we will present the options once they become available.

Fitness & Mobility:

Expedition voyaging is designed to accommodate a wide range of abilities, however a certain level of mobility is required to participate in onshore activities and navigate the ship safely. Embarking and disembarking from Zodiac boats is essential for participating in shore excursions and wildlife encounters. You should be able to step on and off the Zodiacs with assistance from crew members using handrails and grab handles for support. During onshore excursions you may need to walk short distances on uneven terrain, sandy beaches, or rocky shores. While strenuous hikes are not compulsory, being able to walk steadily and navigate moderate terrain is important for enjoying the wildlife encounters and exploring the natural surroundings. Please also be mindful of the cold weather and the impact this may have on your mobility.

Onboard the ship you should be able to move around safely and comfortably, especially during potentially rough seas or inclement weather conditions. This includes being able to navigate stairs, corridors, and outdoor decks while using handrails and grab handles for support as needed. If you have specific mobility concerns or accessibility needs please discuss these with our friendly team.

Extensions:

To enhance your adventure, why not consider extending your journey? Imagine feeling the spray of the mighty Iguazu Falls, embarking on a quest to spot elusive pumas amidst Patagonia's rugged landscapes,

witnessing the majestic southern right whale in Trelew, or setting off on a self-drive exploration through Patagonia’s breathtaking terrain. Once flight schedules are released, we’ll provide a selection of tailored extension options.

FLIGHT SCHEDULE

1. +1 = Arriving the following day
2. Dates and times are 'local time' and subject to alteration at the carriers discretion

DAY	FLIGHT	FROM	TO	DEPARTURE	ARRIVAL	AIRLINE
Day 1	BA249	London Heathrow - LHR	Buenos Aires - EZE	22:10	11:50 +1	British Airways
Day 3	AR1886	Buenos Aires - AEP	Ushuaia - USH	11:05	14:45	Aerolineas Argentinas
Day 14	AR1895	Ushuaia - USH	Buenos Aires - AEP	11:20	16:30	Aerolineas Argentinas
Day 15	BA248	Buenos Aires - EZE	London Heathrow - LHR	13:35	08:10 +1	British Airways

INCLUSIONS	EXCLUSIONS
<ul style="list-style-type: none"> • International and domestic flights in economy class • Pre- and post-voyage arrangements • Onboard accommodation and meals during the voyage as described • Snacks, tea, and coffee throughout the voyage • All shore excursions and activities throughout the voyage • Ship-to-shore helicopter transfers to visit Snow Hill Island (subject to weather conditions with no specific amount of helicopter time guaranteed) • A full programme of talks, presentations and workshops • Complimentary use of rubber boots • Conservation fund contribution 	<ul style="list-style-type: none"> • Gratuities • Travel insurance • Any personal items

More information about Ortelius

Conservation credentials

The Ortelius has an ongoing commitment to responsible, sustainable travel and this is reflected through a number of initiatives involving polar awareness, supporting local communities, and protecting wildlife. Environmental management systems include waste reduction and removal, no single-use plastics, investing in new technology to reduce vessel impact and emissions, and assisting scientists with polar projects. Passengers on board the Ortelius also have the opportunity to participate in 'Citizen Science' projects that directly contribute to ongoing research.

Cabin descriptions, configurations and deck plan



Twin Porthole

Two single beds
2 porthole windows
En-suite bathroom
Deck 3 & 4



Twin Window Cabin

Two single beds
2 windows
En-suite bathroom
Deck 5



Twin Deluxe

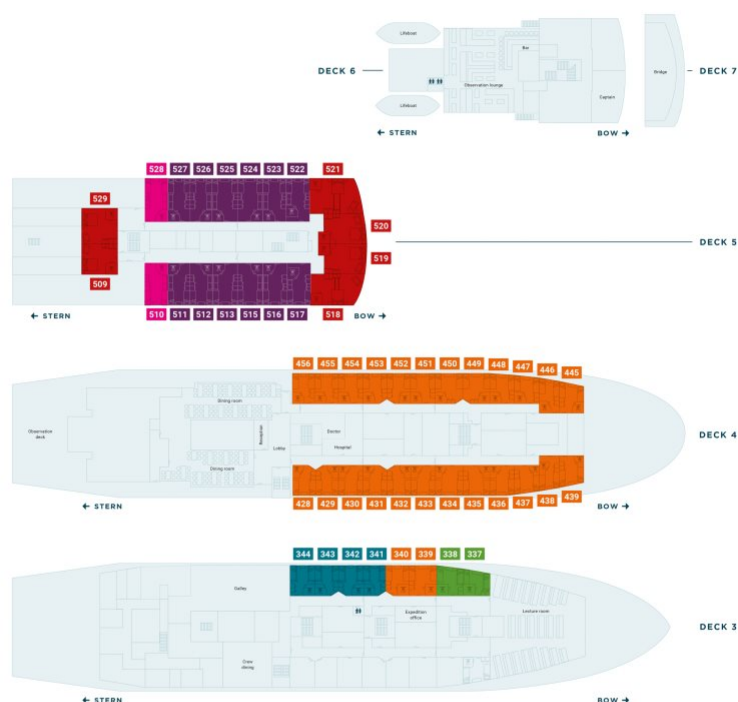
Two single beds
3 windows
En-suite bathroom
Deck 5



Superior Cabin

One double bed and 1 single (sofa) bed
2 windows
En-suite bathroom
Deck 5

M/V ORTELIUS DECK PLAN



M/V ORTELIUS DECK PLAN OCEANWIDE EXPEDITIONS		
ROOM TYPES		
■ Superior	■ Twin Porthole	
■ Twin Deluxe	■ Twin Porthole plus additional third bed	
■ Twin Window	■ Quadruple Porthole	
BEDS		
■ Upper/lower berth	■ Double bed	
■ Lower berth		
SANITARY		
■ Toilet		
■ Bathroom		

BOOKING INFORMATION

The itinerary is perfect - I want to book.

Great! If you wish to go ahead, booking is easy. To secure your holiday, we simply require you to:

1. Read our booking terms and conditions before making your booking. They are available to read on our [website](#). If you would like us to post or email you a copy, just ask.

2. Pay a deposit, which your consultant will usually take over the phone. If you prefer, you may also pay by bank transfer into the account details provided below.

🐾 Account No: 13777049

🐾 Sort Code: 20-97-19

🐾 Account Name: The Natural Travel Collection Ltd (we recommend abbreviating to "TNTC Ltd")

🐾 Bank Name: Barclays

🐾 **Please include your surname and booking number (0) as a payment reference.**

🐾 *If you wish to pay from an overseas bank account, please ask your consultant for details.*

The deposit we require is **£200 per person** or **20% of the total** of the total value of the trip – whichever is the greater. There may be instances when we have to ask for a higher deposit – but we will advise you if this is the case.

Flight installment if your holiday includes instant purchase flights, we will also require the full payment for these at the time you book your holiday. For example, this would be required if your holiday includes flights with a low cost carrier, or if you are booking a last-minute holiday.

3. Complete your departure lounge. Once we receive your deposit we will set about getting all the arrangements confirmed for your holiday. We will confirm receipt of your payment and you will receive an email requiring you to submit full details of everyone travelling on your booking in your 'Departure Lounge', our secure online passenger portal.

4. We'll re-confirm your holiday once you have completed your 'Departure Lounge'. We'll send you a confirmation pack that clarifies the details of your booking and the reservations we have made for you, along with your ATOL certificate, the invoice for your holiday, and practical travel advice for your chosen destination.

If any changes to the proposed itinerary are necessary at any stage, your consultant will inform you and suggest a suitable alternative.

What about the final balance?

We require you to make full payment **8 weeks before departure** (**16 weeks** in the case of wildlife cruises and 12 weeks for trips to the Falkland Islands). If you book within **8 weeks** of departure (or 16 in the case of a wildlife cruise, or 12 in the case of a trip to the Falklands), you must make full payment when you book.

Is my money 100% secure?

In a nutshell, yes.

We are a fully bonded tour operator and hold an **Air Travel Organiser's Licence** (ATOL) issued by the Civil Aviation Authority (CAA), which regulates the travel industry. This provides you with complete financial protection and a guarantee on all money we receive from you.

Every holiday we sell that includes a flight element is protected under our ATOL (licence number 10544). In the unlikely event of our insolvency, the CAA will ensure that you are not stranded abroad or will arrange to refund any money you have paid to us for an advance booking.

And our membership of the **Association of Bonded Travel Organisers Trust Limited** (ABTOT) provides full financial protection under the Package Travel, Package Holidays and Package Tours Regulations 1992 for packages that exclude flights.

There is more information about your financial protection here: www.wildlifeworldwide.com/financial-security

How about travel insurance?

We strongly recommend that you take out travel insurance at the time of booking your trip as cover will commence for pre-departure cancellation from the date you purchase the insurance. This will therefore provide cover should you have to cancel your trip for an insured reason such as illness or serious accident preventing you from travelling.

The [Campbell Irvine Direct](#) insurance includes cover in the event of you having to cancel or curtail your holiday.

Important Details

Please refer to the policy wording for full details of the cover available.

Full details of cover provided are shown on the policy document, a copy of which is available to download online. Read it carefully to ensure you are happy with the cover provided. The policy contains a 21 day cooling off period and details of how to make a claim and who to contact in the event of a medical emergency. The policy also includes certain terms and conditions, exclusions and excesses. Please note cover is excluded for any defined pre-existing medical condition from which you or any person upon whom travel depends are suffering. For any queries please contact the insurers medical helpline on 01702 242 7237 or visit their [website](#) as additional cover may be purchased directly from the insurer's medical screening helpline for certain conditions.

The Natural Travel Collection Ltd is an Introducer Appointed Representative of Campbell Irvine Ltd. which is authorised and regulated by the Financial Conduct Authority.

Contact [Campbell Irvine Direct](#) for your travel insurance quote.

Tel: 01702 427 236

Email: info@campbellirvine.com

Following travel advice

Please ensure that you fulfil all entry requirements for your final destination and any transit destinations that you may be travelling through. The Foreign Commonwealth & Development Office website offers destination advice on their [Foreign Travel Advice](#) webpage including local customs and laws.